

# Eduroam Instructions using Windows:

## Table of Contents

- ▲ Requirements
- ▲ Installation of the certificates for "eduroam"
- ▲ Setting up the Wi-Fi connection "eduroam"
- ▲ Registration using Windows Vista / 7
- ▲ Registration using Windows 8
- ▲ Tutorial: Setting up a Wi-Fi connection "eduroam" using Windows

## Requirements

- ▲ Valid UniAccount of the University of Kassel.
- ▲ Functioning Wi-Fi card or Wi-Fi stick with WPA/WPA2 support.
- ▲ Automatic IP-Address allocation DHCP has to be activated. This is standard procedure.
- ▲ One-time installation of various certificates for the use of the Wi-Fi.

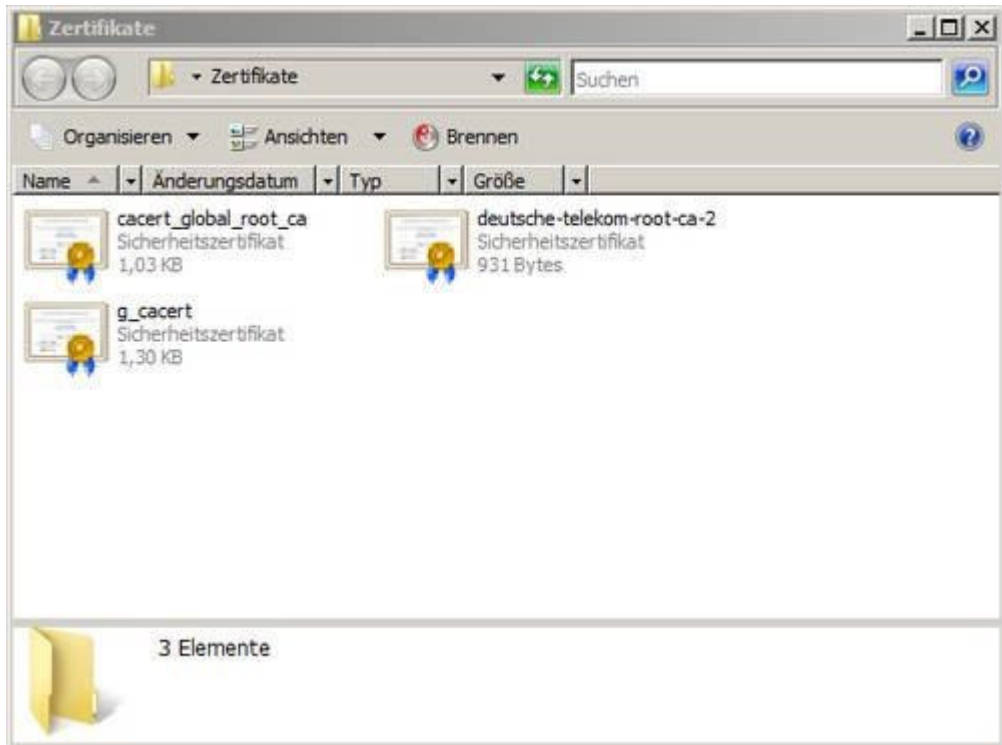
For users of **Windows XP SP3** please use these installation instructions.

Users of the subsequent Windows versions Vista / 7 / 8 / 8.1 please follow the instructions on this site.

## Installation of the certificates for "eduroam"

Download the following three certificates:

- ▲ Deutsche Telekom Wurzelzertifikat/Root Certificate CA 2  
(Source: <https://www.pki.dfn.de/fileadmin/PKI/zertifikate/deutsche-telekom-root-ca-2.der>)
- ▲ Wurzelzertifikat/Root Certificate  
(Source: [http://cdp.pca.dfn.de/global-root-ca/pub/cacert/cacert\\_global\\_root\\_ca.der](http://cdp.pca.dfn.de/global-root-ca/pub/cacert/cacert_global_root_ca.der))
- ▲ University of Kassel CA Certificate  
(Source: [http://cdp.pca.dfn.de/uni-kassel-ca/pub/cacert/g\\_cacert.der](http://cdp.pca.dfn.de/uni-kassel-ca/pub/cacert/g_cacert.der))



By double clicking one of the files (e.g. deutsche-telekom-root-ca-2.der) an information window opens via the certificate. Click on *Zertifikat installieren/Install Certificate...*

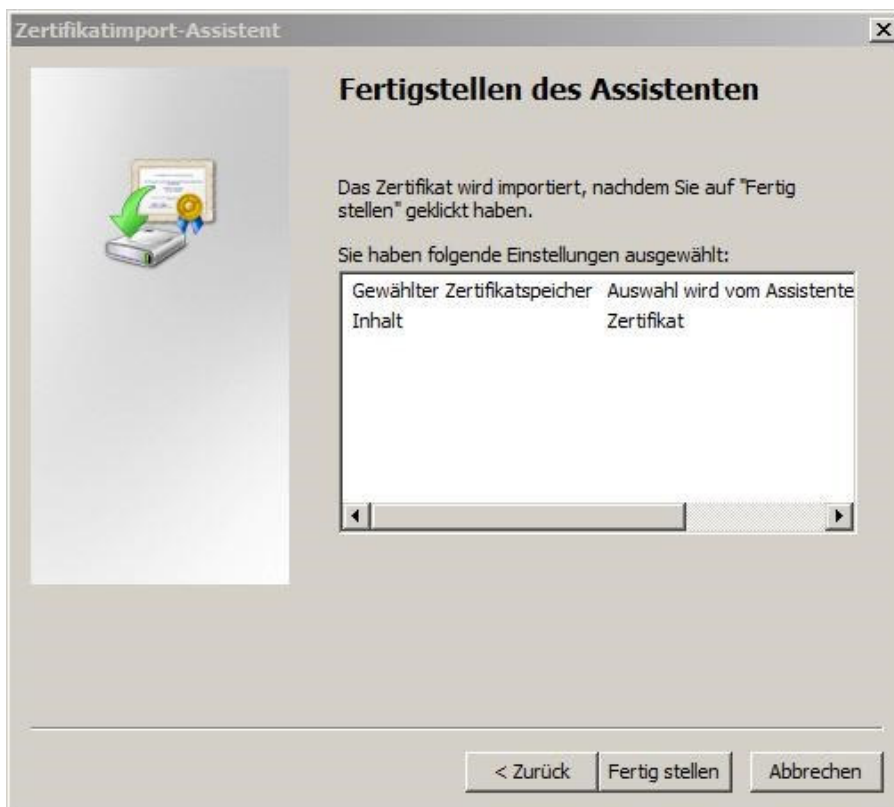


The certificate import assistant then starts. **Nothing** has to be changed in the given setting:



Click on *Weiter/Continue* until the final page appears and click on *Fertig stellen/Finish*.

Perform this installation **for all three** certificates.



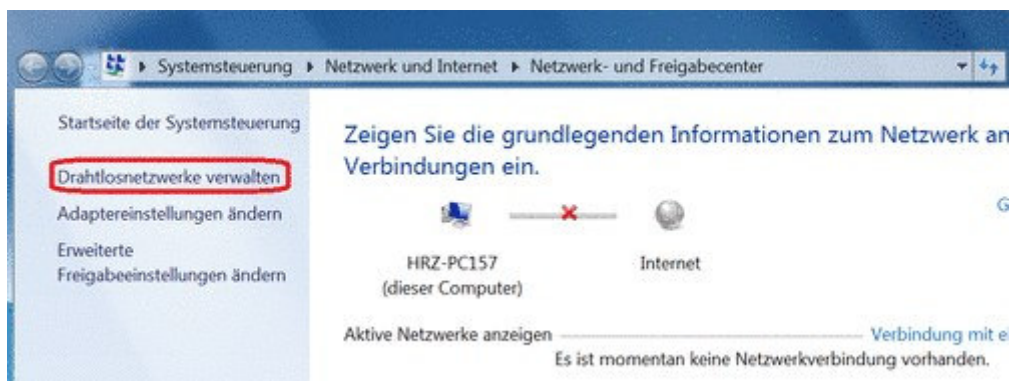
## Setting up the Wi-Fi connection "eduroam"

To create the connection with "eduroam" please right-click the Wi-Fi symbol in the *Taskleiste/Menu Bar*. A window opens when you click on *Netzwerk- und Freigabecenter öffnen/Open Network and Sharing Center*.

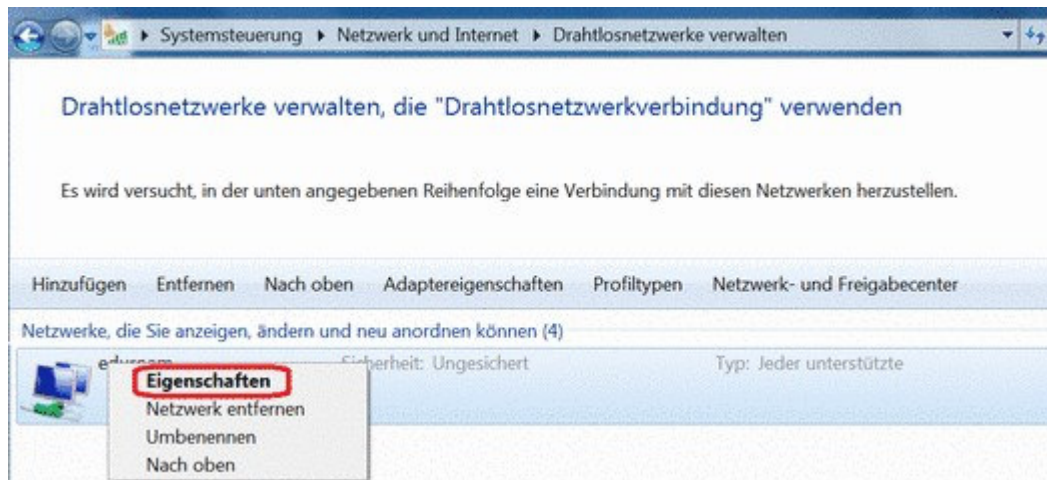


□

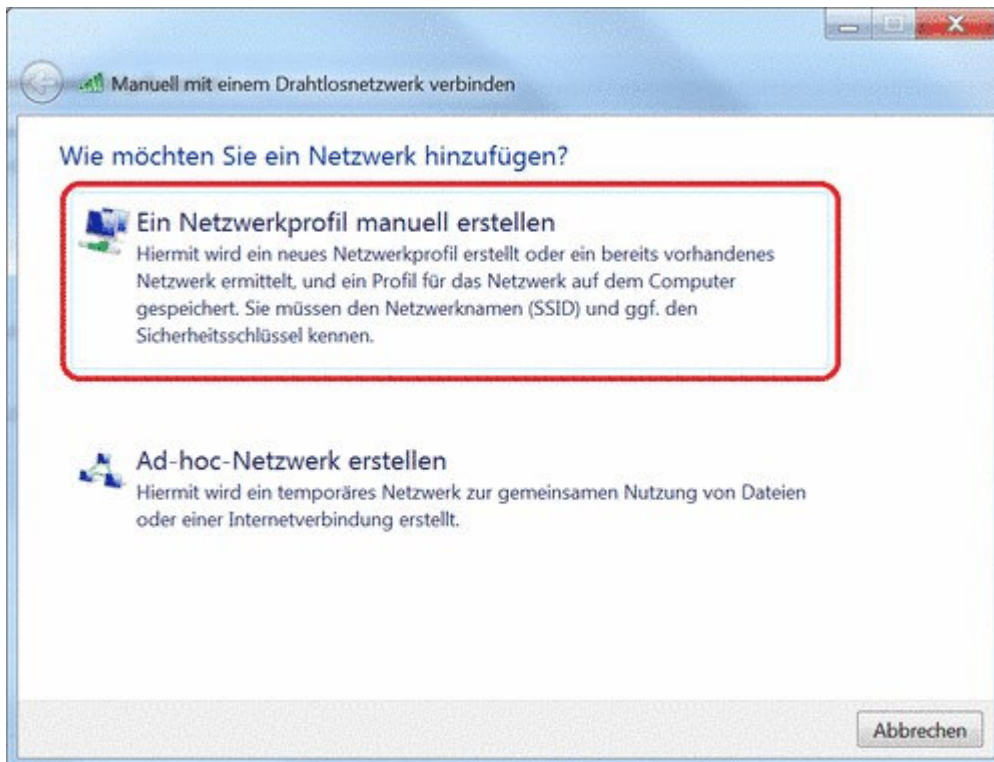
The control panel is opened in the new window. Please click on *Drahtlosnetzwerke verwalten/Administer Wireless Network* on the left



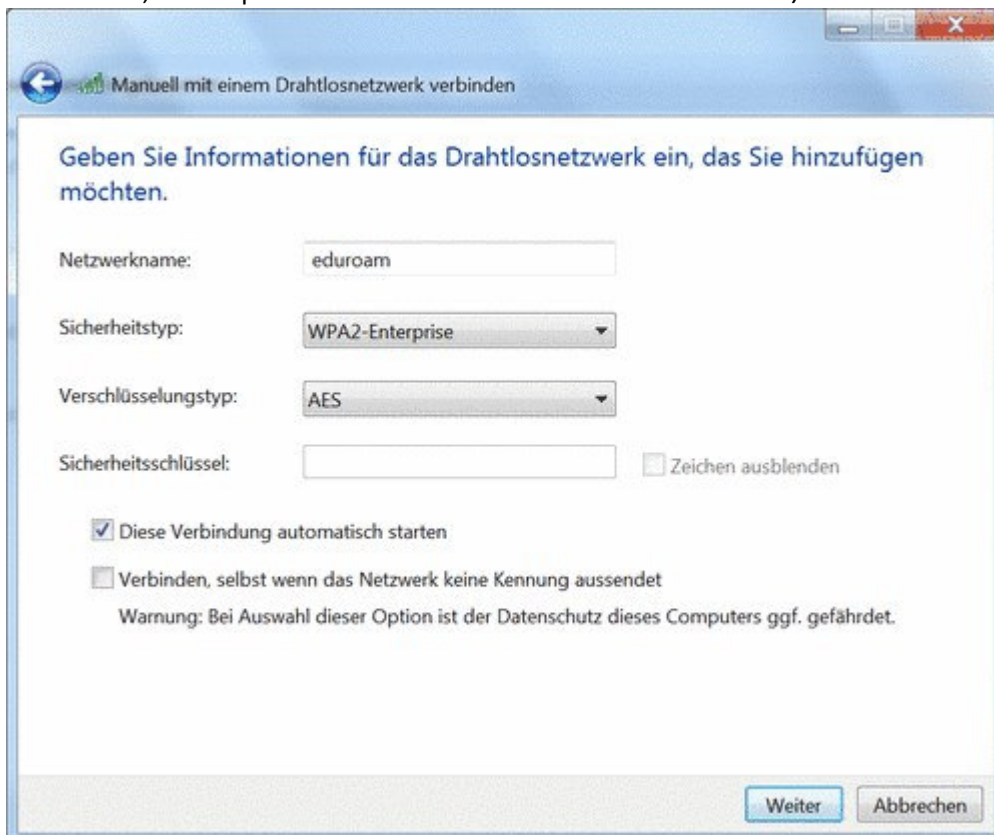
Wireless networks are shown here. Click on network "eduroam". With right click on "eduroam" please choose *Eigenschaften/Properties*. If the "eduroam" network is displayed, go to the settings' register *Sicherheit/Security*.



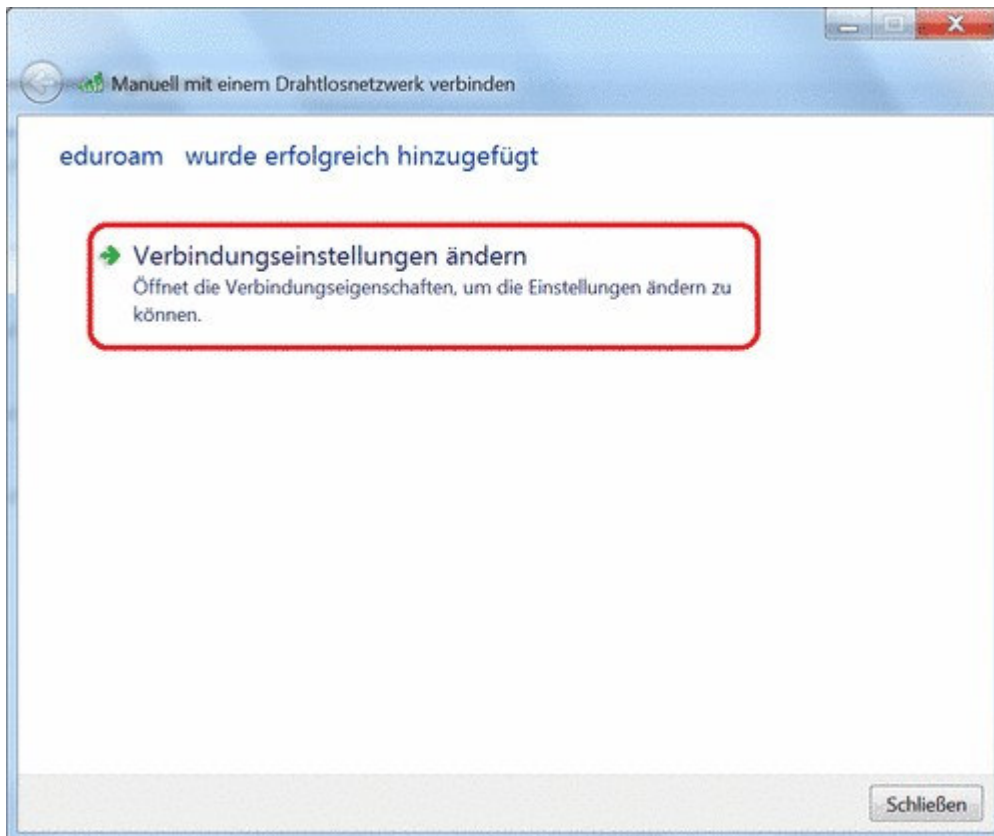
If the wireless network is not displayed, you will have to click on *Hinzufügen/Add* and set it up manually. A new window opens and asks, if you want to add a network. Please click on *Ein Netzwerkprofil manuell erstellen/Manual Setup of Network Profile*.



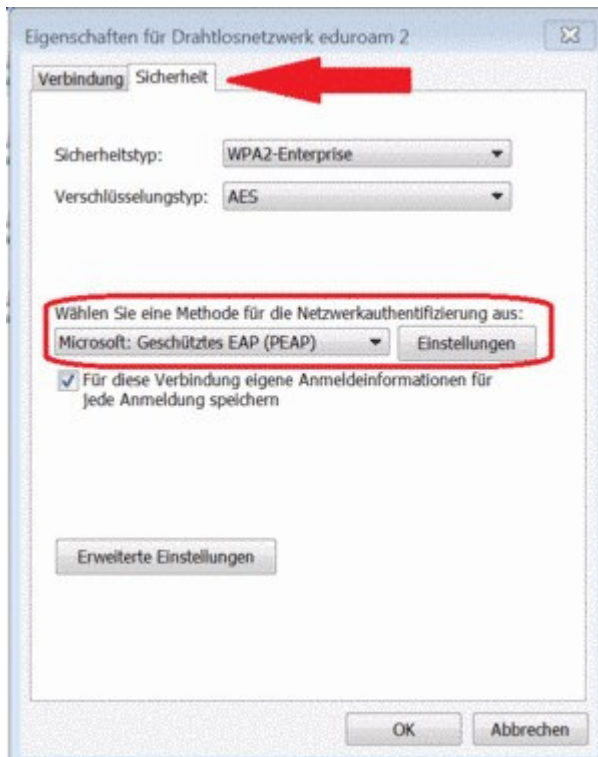
In the following window take over the data from the adjacent image. If under security type the option *WPA2-Enterprise* is not available, select *WPA-Enterprise*. In the event of the encrypted type choose *TKIP*, if the option *AES* is not available. Then click on *Weiter/Continue*.



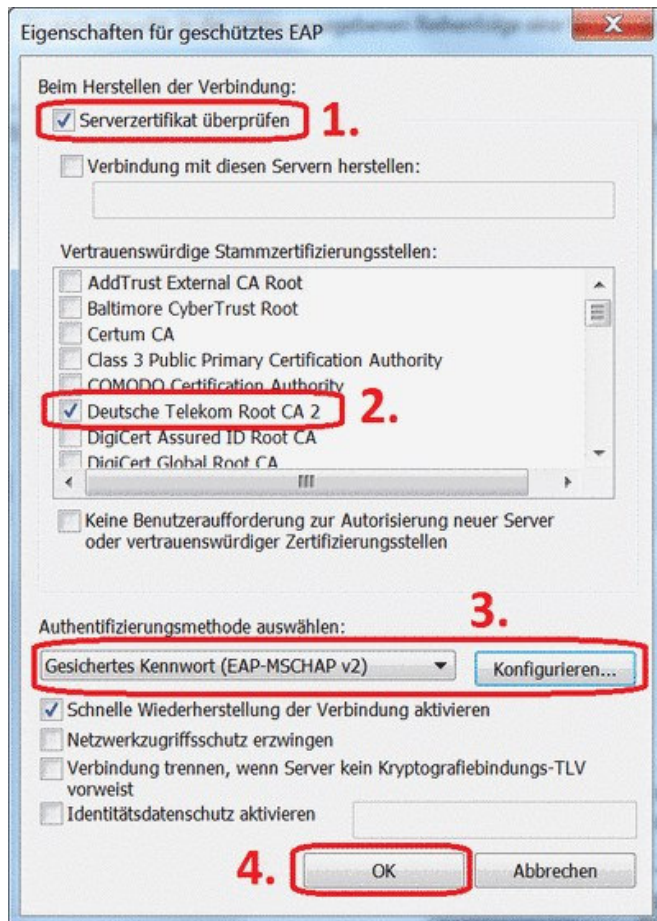
In the next dialogue window select *Verbindungseinstellungen ändern/Change Connection Settings*.



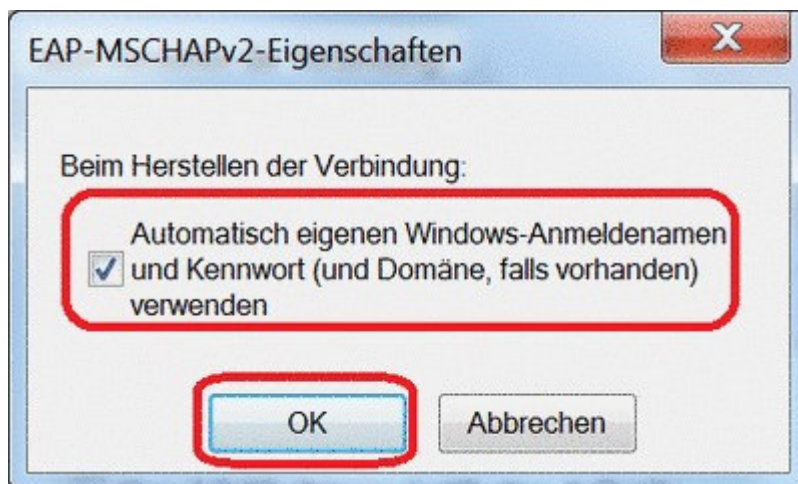
In the next window change to the registry card *Sicherheit/Security*. First check that *Microsoft: Protected EAP PEAP* is selected using authentication method and then click on *Settings/Einstellungen*.



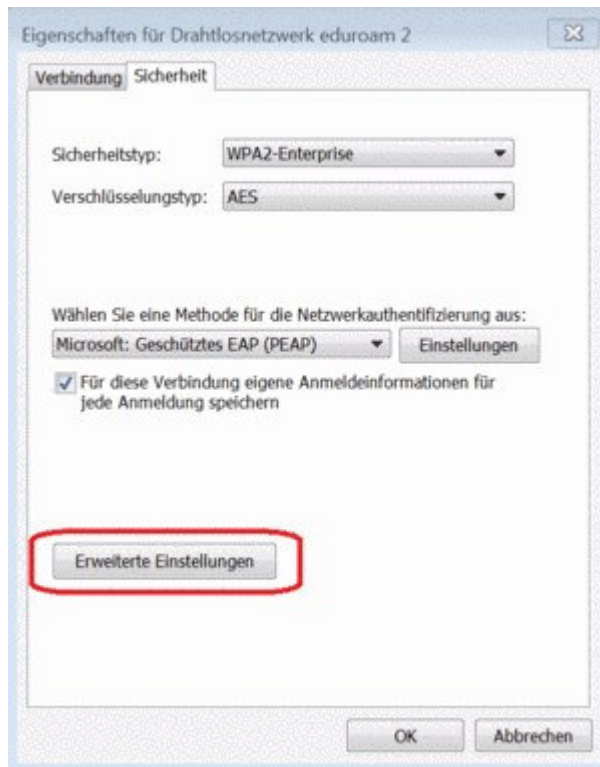
In the window that opens *Eigenschaften für geschütztes EAP/Properties for Protected EAP* take over the settings, as shown in the image. Then click on *Konfigurieren/Configure*.



The window *EAP-MSCHAPv2 Eigenschaften/Properties* opens. Remove the tick for the automatic registration with your Windows registration information and confirm this setting by clicking *OK*. This brings you back to window "*eduroam*" *Eigenschaften/Properties*. Confirm the settings in all windows with *OK*.



In the window now opening click on *Erweiterte Einstellungen/Advanced Settings*.



Now select *802.1X Einstellungen/Settings*. Tick *Authentifizierungsmodus angeben/Specify Authentication Mode* and select *Benutzerauthentifizierung/User Authentication*. Then click *OK* and in the next window click once again *OK*.

You have now made all the required settings.



## Registration using Windows Vista / 7

For the connection using Windows Vista / 7 you must first install the certificates and make the appropriate settings.

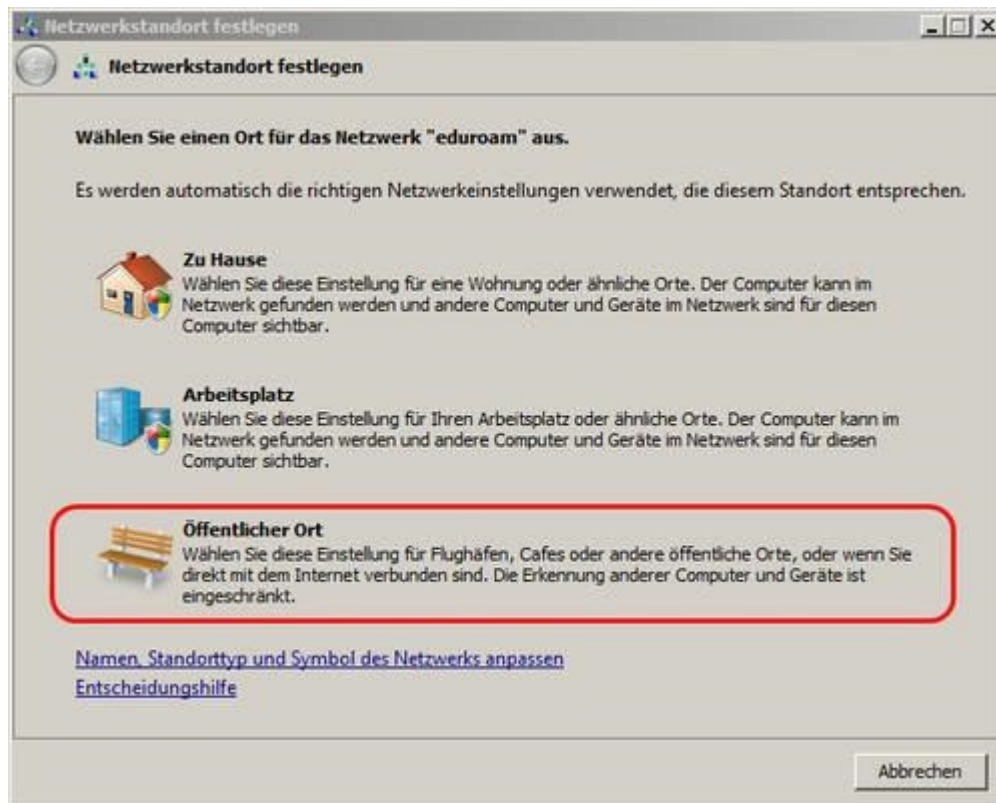
When you are in the range of "eduroam", the connection will be established automatically. At the bottom right of the menu bar a speech bubble appears. Click on it.



A registration window then opens. Enter the user name and password of your [UniAccount](#). The user name has to include **@uni-kassel.de**. In the registration field leave the line empty and then confirm with *OK*.



When you connect with the network for the first time, you will be asked by Windows where the network settings are to be adjusted. Select *Öffentlicher Ort/Public Place*. Your Wi-Fi connection with "eduroam" is now permanently set up.



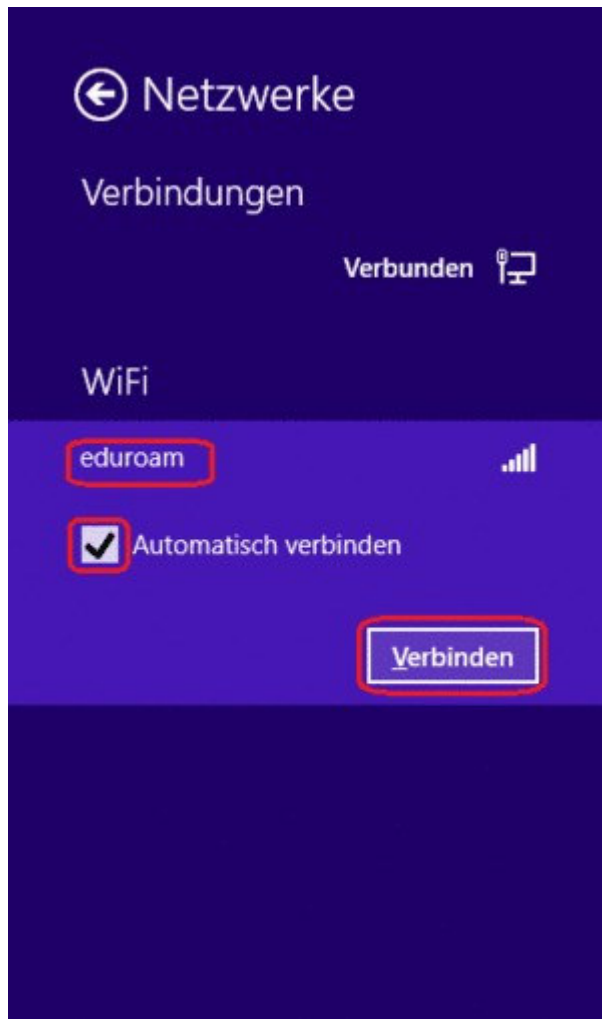
## Registration using Windows 8

After installing the appropriate certificates you have to connect with "eduroam".

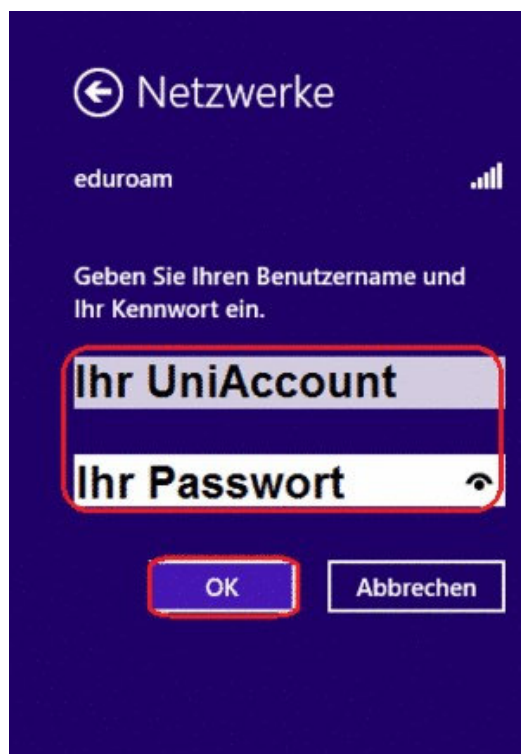
With the right mouse button click on the Wi-Fi symbol and select *Netzwerk- und Freigabecenter /Network and Sharing Center*. Alternatively, open the *Systemsteuerung/Control Panel* by pressing *Windows Key + Q* and entering *Systemsteuerung/Control Panel*. Finally, click on *Netzwerk- und Freigabecenter /Network and Sharing Center*.

Here you have to set up Wi-Fi "eduroam" in accordance with the settings of Windows Vista / 7.

Finally click on the Wi-Fi symbol in the menu bar and select "eduroam". Tick "*Automatisch verbinden/Automatically Connect*". Then click on "*Verbinden/Connect*".



After establishing a connection you will be requested to enter your UniAccount and password. Enter this information into the appropriate fields and click on "OK".



After a successful login you are now connected with "eduroam".

